

PAJERO



MITSUBISHI
MOTORS

Drive your Ambition



Mobility without compromise.

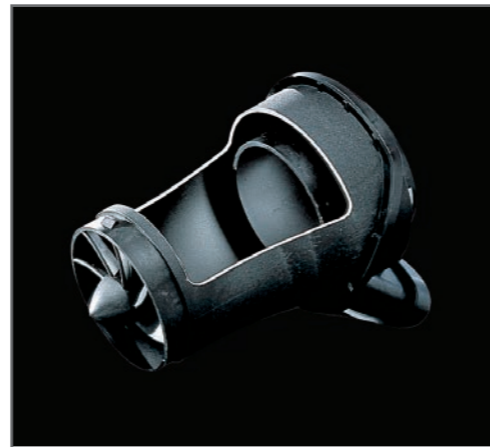


3.2L 4 In-Line 16-Valve Turbocharged and Intercooled VGT Di-Diesel

Maximum Power 192 Ps 3,800 rpm	Maximum Torque 441 N-m 2,000 rpm
---	---

Variable Geometry Turbo

The Variable Geometry Turbocharger with a variable vane turbine, provides optimal boost pressure control for different driving conditions. It helps achieve greater fuel efficiency as well as better acceleration.



Cyclone-Type Pre-Air Cleaner

The Cyclone air cleaner increases air draw, while keeping dust and water out of the intake. This allows your engine to perform at its best no matter the road condition.

A powerful legacy drives on.



Super Select 4WD [SS4-II]

The Super Select 4WD-II delivers superior off-road performance as it offers the advantage of a 4-wheel drive setting. Included in the system is a shift-on-the-fly capability that allows the driver to immediately adjust his gear range according to road conditions. A center differential lock controls torque distribution to the front and rear tires providing the driver optimum handling.



2H (2WD high range)

Shift into rear-wheel drive for cruising down the highway or going across town.

4H (4WD high range)

For added traction in bad weather and rough roads. The front/rear torque split adjusts to 40:60 to give you greater control for high-speed driving.

4HLc (4WD high range with locked center differential)

In rugged or slippery conditions, the 4HLc mode distributes power equally to all four wheels for off-road excitement with a steady sense of control.

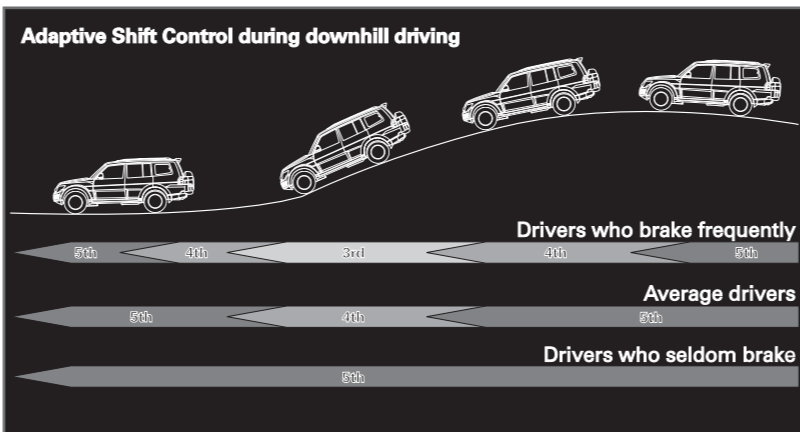
4LLc (4WD low range with locked center differential)

When you need all the power to slog through the roughest terrain... even the stickiest mud.

INVECS-II 5-Speed A/T with Sports Mode



The INVECS-II adapts to your driving behaviour that results in accurate and smooth gear shifts. The result? No unwanted upshifts. No unintended downshifts. Just smooth, quick shifts right when you want them.

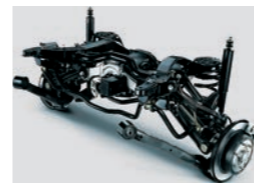


Suspension Travel

The Pajero holds the road better regardless of the terrain, thanks to increased wheel travel and added traction. Each wheel can raise, lower or pivot independently. Thus keeping more tire surface on the ground for greater stability.



Front: Double Wishbone Suspension with Stabilizer

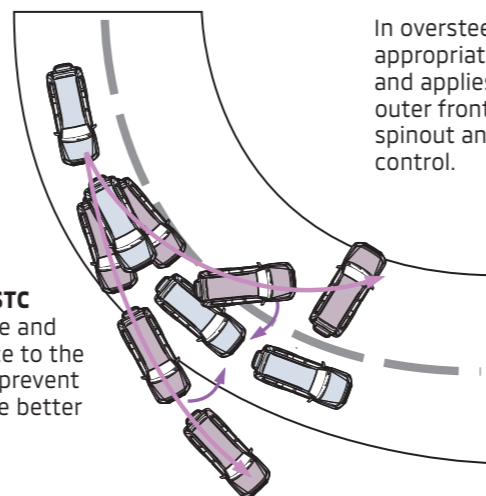


Rear: Multi-link Suspension with Stabilizer



Mitsubishi Active Stability and Traction Control

M-ASTC maintains vehicle stability and optimizes traction to prevent wheels skidding during adverse conditions and emergency maneuvers by applying brake force to one or more wheels and adjusting engine output.



In understeer, M-ASTC determines yaw rate and applies braking force to the inner rear wheel to prevent drift-out and ensure better trace control.

In oversteer, M-ASTC determines appropriate counter yaw moment and applies braking force to the outer front wheel to prevent spinout and ensure better trace control.



Bumper-Integrated Chrome-Plated Radiator Front Grille



• HID Headlamps with Automatic High Beam Function
• Headlamp Washer



18" Alloy Wheels



Power Tilt and Slide Function Sun Roof



• Approach Lamp • Turn Signal Lamp



Power Side Mirror with Fold Function



Door Claddings and Side Steps



3rd Brake Lamp and Rear Wiper with Washer



Spare Tire Cover with Rear Fog Lamp and Reverse Sensors

Safety Features

Enjoy your drive with the peace of mind knowing that you and your passengers are safe and secure.

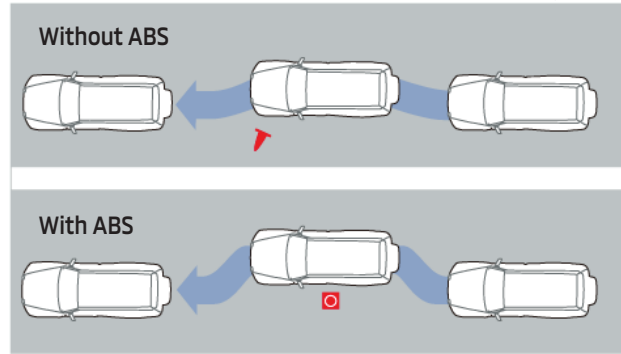


Front 17-inch Ventilated Discs (4-Pot)



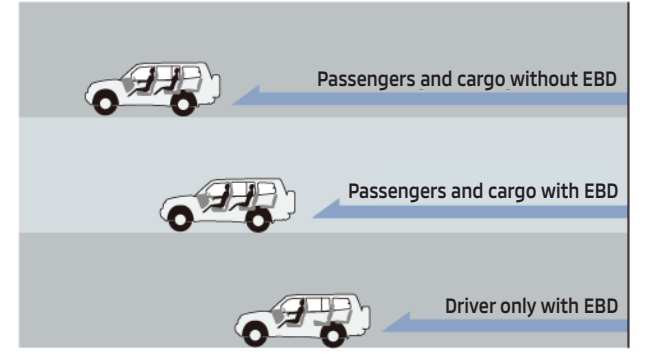
Rear 17-inch Ventilated Drum-in-Discs

Anti-Lock Braking System



Anti-lock Braking System [ABS] helps keep the driver in control of the vehicle when braking on slippery road by preventing the wheels from locking up.

Electronic Brakeforce Distribution [EBD]



Independently manages each braking force channel to make sure the vehicle comes to a quick and safe stop.

RISE BODY

Reinforced Impact Safety Evolution [RISE] Body

Mitsubishi Motors RISE Body is designed to disperse the force of impact away from the cabin thereby minimizing cabin deformation that keeps the driver and passenger safe.



- Thick and Strong Frame Structure
- Collision Energy Absorber Joints
- Front Dual Stage Airbags
- Side Impact Beam
- Curtain Airbags
- Side Airbags



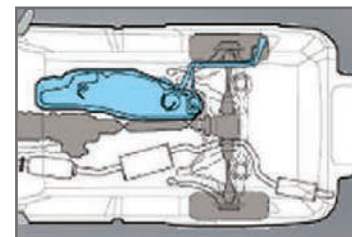
Premium Security Alarm System



LED Daytime Running Lamp



Collapsible Propeller Shaft



Safety Design Fuel Tank



Reverse Camera



• Rear Aircon Vents • Genuine Leather Seats* • Moulded Door Trims with Silver and Carbon Fiber Accents
 • 4-way Power Adjustable Passenger Seat.



• 4-Spoke Leather-Wrapped Steering Wheel • Audio Remote and Cruise Control
 • Leather-Wrapped Shift Knobs • Piano-Black Accent



6.9" LCD Monitor with Touch Screen Interface



High Contrast Back-Lit Meters with Red Illumination



Multi-media Entertainment System with GPS Navigation Technology



• 10-Way Power Adjustable Driver's Seat



Fold Flat 3rd Row



2nd Row 60 / 40 Split Seatback with Reclining Adjuster and Fold Function



Full Folding 2nd Row



Automatic Climate Control System



Rear Air Conditioner



• Audio/Video jack
 • USB Port



Aluminum Pedals

**Interior color will depend on the exterior color. Ask your Mitsubishi Motors Sales Representative on the available interior and exterior color combinations for your Pajero.*

PAJERO GLS 4WD A/T

GENERAL SPECIFICATIONS

Overall Length	4,900 mm
Overall Width	1,875 mm
Overall Height	1,870 mm
Wheelbase	2,780 mm
Min. Ground Clearance	235 mm
Tread (Front/Rear)	1,570 / 1,570 mm
Gross Vehicle Weight	2,865 kg
Curb Weight	2,245 kg
Fuel Tank Capacity	88 L
Min. Turning Radius	5.7 m

ENGINE

Model and Type	(4M41) 3.2L In-Line 4 Turbocharged and Intercooled 16-Valve VGT Di-Diesel
Fuel System	Electronic Common Rail Direct Injection
Max. Power	192 Ps / 3,800 rpm
Max. Torque	441 N-m / 2,000 rpm

TRANSMISSION

Type	INVECS-II 5-speed automatic with Sports Mode
------	--

TIRES AND WHEELS

Tires	265 / 60 / R18 110H
Wheels	18-inch x 7.5J Alloy

BRAKES

Front	17-inch Ventilated Discs (4-Pot)
Rear	17-inch Ventilated Drum-in-Discs

SUSPENSION

Front	Double Wishbone with Coil Springs and Stabilizer Bar
Rear	Multi-Link Coil Springs and Stabilizer Bar

STEERING

Gear Type	Rack and Pinion
Power Steering	Equipped
Steering Wheel	4-spoke Leather-Wrapped



AUDIO SYSTEM

Speakers	6 (including 2 tweeters)
Antenna	Glass-printed

SAFETY

Front SRS Airbags	Driver and Front Passenger (Dual Stage)
Side Airbags	Equipped
Curtain Airbags	Equipped
Seatbelts	Front 3 pt. ELR with Pretensioners and Adjustable Belt Anchors x2 2nd Row 3 pt. ELR x3 3rd Row 3 pt. ELR x2
Anti-lock Braking System [ABS]	Equipped with Electronic Brakeforce Distribution [EBD]
Brake Override System [BOS]	Equipped
Mitsubishi Active Stability and Traction Control [M-ASTC]	Equipped
ISO-Fix	Equipped
Tether Anchors	Equipped

BF11002009 © Mitsubishi Motors Philippines Corporation

 MitsubishiMotorsPH
 @mitsubishimotorsph
www.mitsubishi-motors.com.ph


**MITSUBISHI
MOTORS**
Drive your Ambition